



Foothill Family
95 YEARS OF EMPOWERING FAMILIES
FOOTHILLFAMILY.ORG

EARLY HEAD START ANNUAL REPORT

2020 - 2021

FOOTHILL FAMILY'S EARLY HEAD START PROGRAM MISSION

to provide high quality, strength-based, comprehensive child development services that empower caregivers to enrich the lives of children, families and communities.

3

PROGRAM OPTIONS

Home-Based, Center-Based, and
Family Child Care

11

CITIES SERVED

Alhambra
Azusa
Baldwin Park
Covina
Duarte
El Monte
La Puente
Pomona
Rosemead
South El Monte
West Covina



COMPREHENSIVE SERVICES FOR LOW-INCOME PREGNANT WOMEN AND FAMILIES WITH CHILDREN FROM 0 TO 3 YEARS

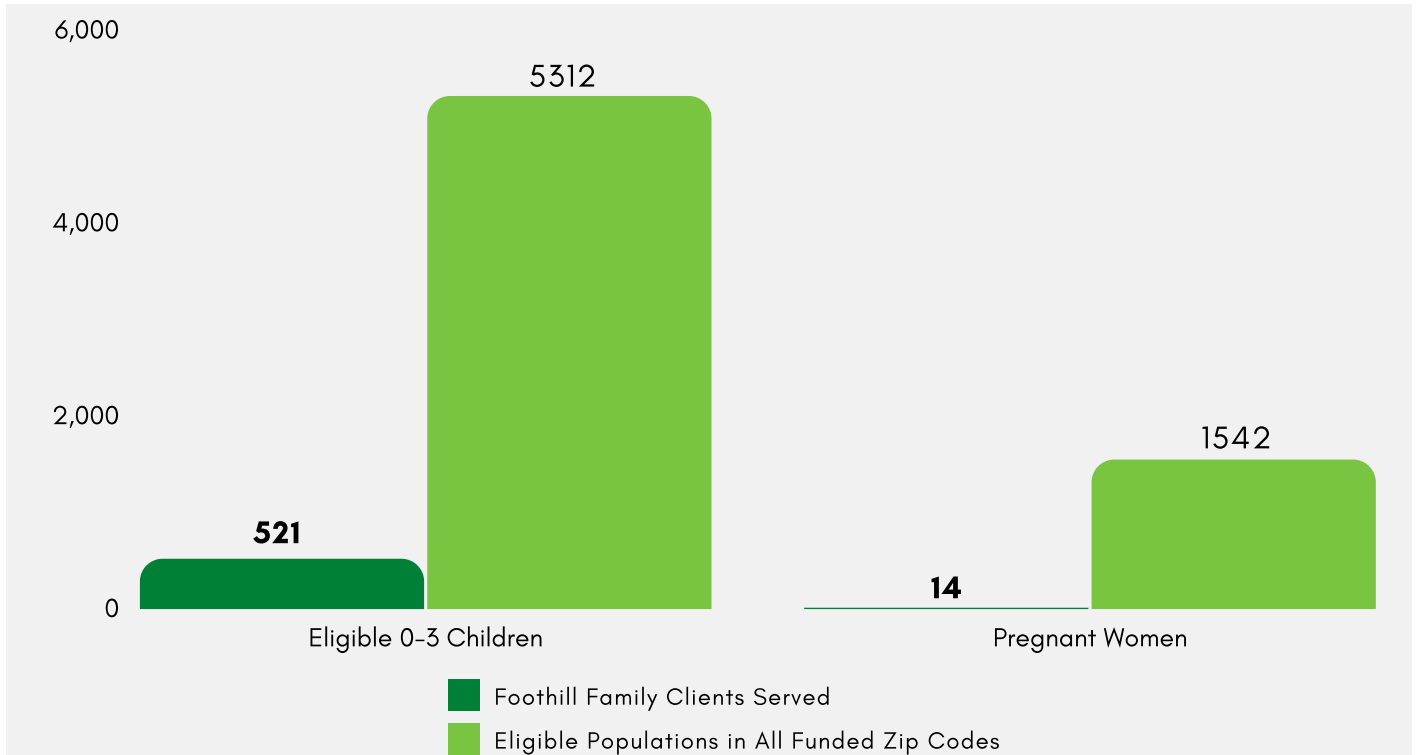
Education
Health
Mental Health/Disabilities
Nutrition
Family Engagement
Social Support

Family Child Care and Center-Based programs are operated in partnership with local licensed child care providers to provide full day, full year services. Infants and toddlers can receive services up to 36 months in licensed Center-based programs and 48 months in licensed Family Child Care homes.

Foothill Family's Early Head Start (EHS) utilizes a strength-based, relationship-focused approach towards school readiness through engaging families as full partners in their child's learning and development. Child care partners are trained in the research-based Creative Curriculum; Home Visitors are certified in the evidence-based Parents as Teachers foundation curriculum. Both are aligned with the Head Start Early Learning Outcomes Framework and the California Infant Toddler Learning and Development Foundations. The program supplements the curriculum with a variety of research-based tools and approaches proven most effective with EHS children and families.

This Annual Report captures key program performance indicators during a 12-month period in order to capture fiscal year end data for the Home-Based and Early Head Start-Child Care Partnerships Program.

TOTAL NUMBER OF ELIGIBLE 0-3 CHILDREN AND PREGNANT WOMEN SERVED IN FUNDED ZIP CODES



* Full 2021 Community Assessment available upon request

** Pregnant women number included is based on the average number of births per year to women living below Federal Poverty Line

During the 2020 -2021 program year, only 9.8% of eligible children ages 0-3 were served, and 0.9% of eligible pregnant women were served, which speaks to the great need for Early Head Start services in our funded zip codes.

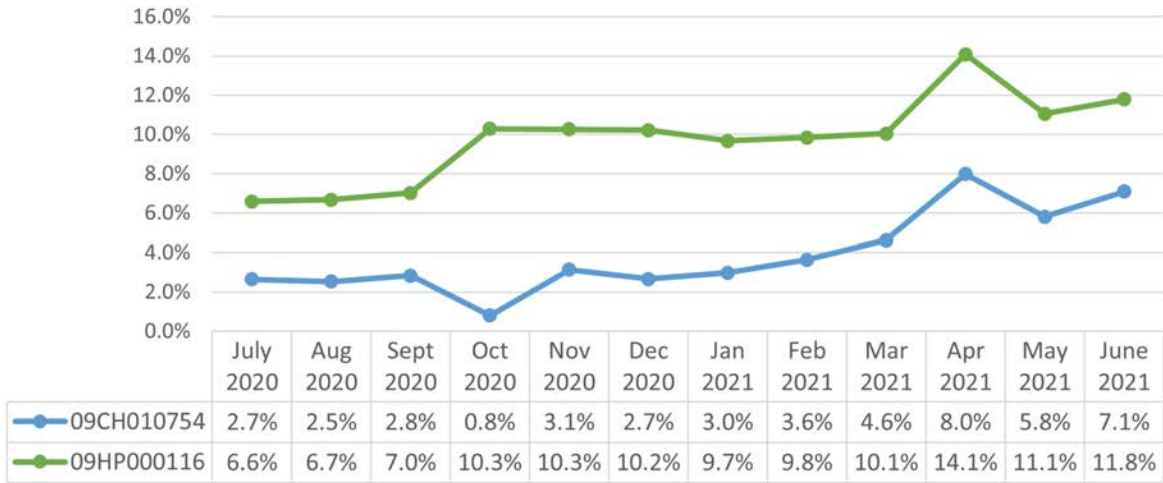
ENROLLMENT PROGRAM DATA, JULY 1ST 2020- JUNE 30TH 2021

	09CH010754* HB & CCP	09HP000116 CCP
AVERAGE MONTHLY ENROLLMENT	71%	95%
CUMULATIVE ENROLLMENT	310	211
NUMBER OF PREGNANT WOMEN	14	N/A
NUMBER OF FAMILIES SERVED	239	170

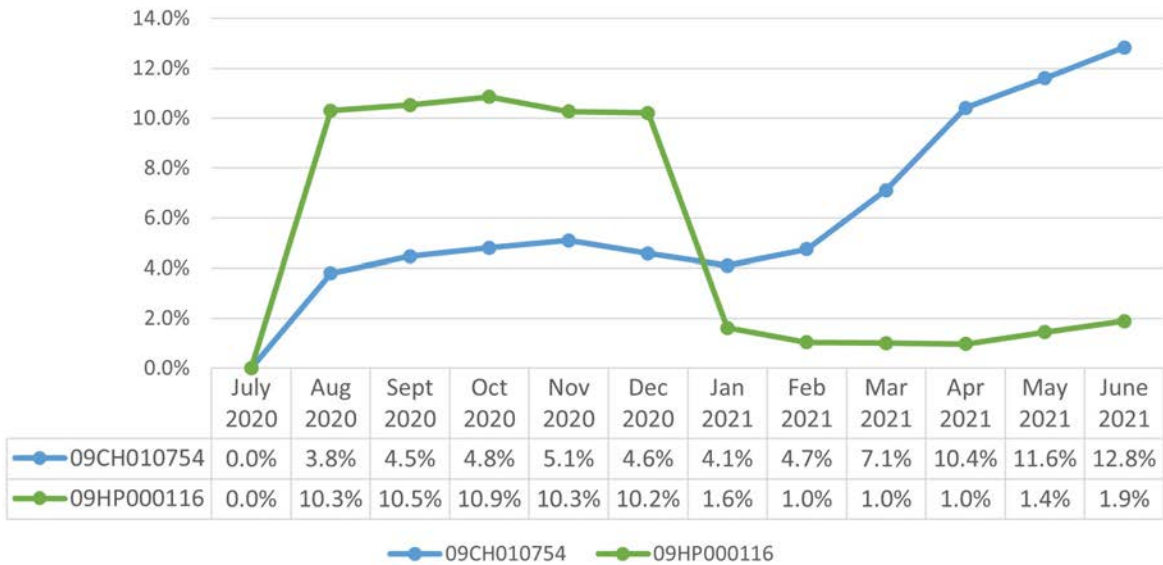
* Early Head Start Home-based grant, 09HP000136 has been aligned into 09CH010754 grant. Due to the COVID-19 pandemic, full enrollment expectations from the Office of Head Start were temporarily placed on hold during this program year.

CHILD HEALTH

Up-to-Date on Physical Exams by Grant



Up-to-Date on Dental Exams by Grant

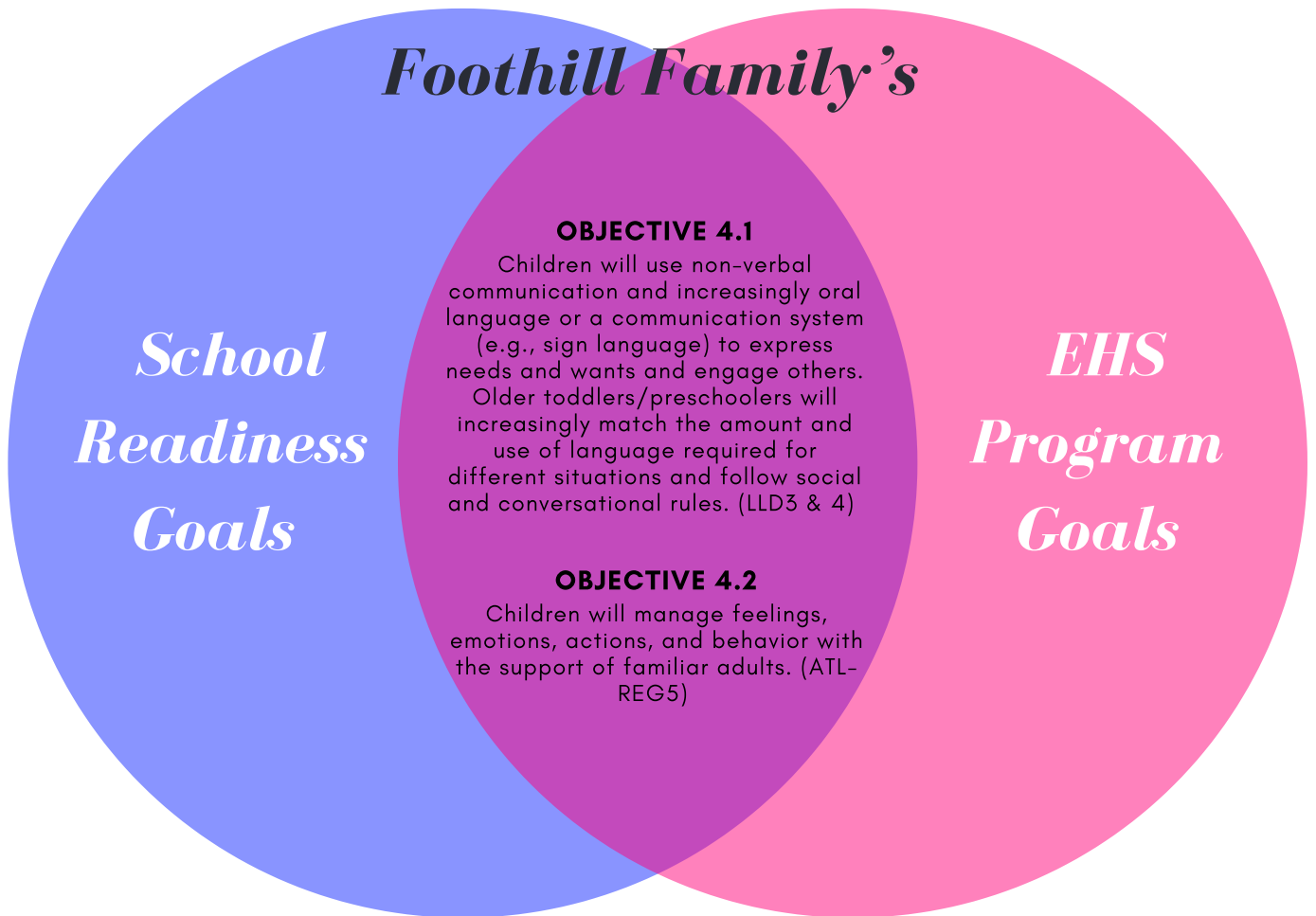


Well-Baby and Dental examination rates continued to be impacted throughout this program year by COVID-19. While the numbers trended upward towards the end of the year, one of the top reasons for children not being up-to-date on medical services was the difficult time families had with scheduling appointments with medical providers due to COVID-19 pandemic. Families had to wait several weeks due to back log in scheduling. The second reason is because families were concerned about taking their children to the doctor and contracting COVID-19. The third reason was a decrease in parent engagement overall. Concerns with children being up-to-date on health services were discussed with the Health Services Advisory Committee. Several solutions were made by medical providers such as creating telehealth appointments for children who needed Well Baby check that did not require vaccinations, prioritizing Well Baby checks for children who needed vaccinations, and not scheduling Well Child Exams and Exams for ill children at the same time. Due to the resurge of COVID-19 in November 2020 to February 2021 in Los Angeles County, we were not able to see improvement in children being up-to-date in medical services, rather a decline, but since March 2021 with the reduced risk of the spread of COVID-19, the number of children up-to-date on health services has slightly increased.

SCHOOL READINESS

The **Improving Head Start for School Readiness Act of 2007** requires all Head Start and Early Head Start programs to address and strengthen school readiness goals. There are five early learning domains: Language and Literacy; Cognition; Approaches to Learning; Physical Health and Motor Development; and Social and Emotional Development. The **Head Start Early Learning Outcomes Framework’s** infant and toddler guidelines align perfectly with the program’s existing school readiness goals, assessment tool, and early education approach.

Foothill Family’s School Readiness Goals are combined with Foothill Family’s EHS Program Goals, under Goal #4: (Child Outcomes/School Readiness): All children will have the skills and make gains in their development to success in school and life. Centralizing our goals into one place allows the program to evaluate children’s progress across both programs using the same measurements between infants/toddlers and preschoolers—better connection of Child Outcomes and School Readiness with the entire Program’s Systems and Services.

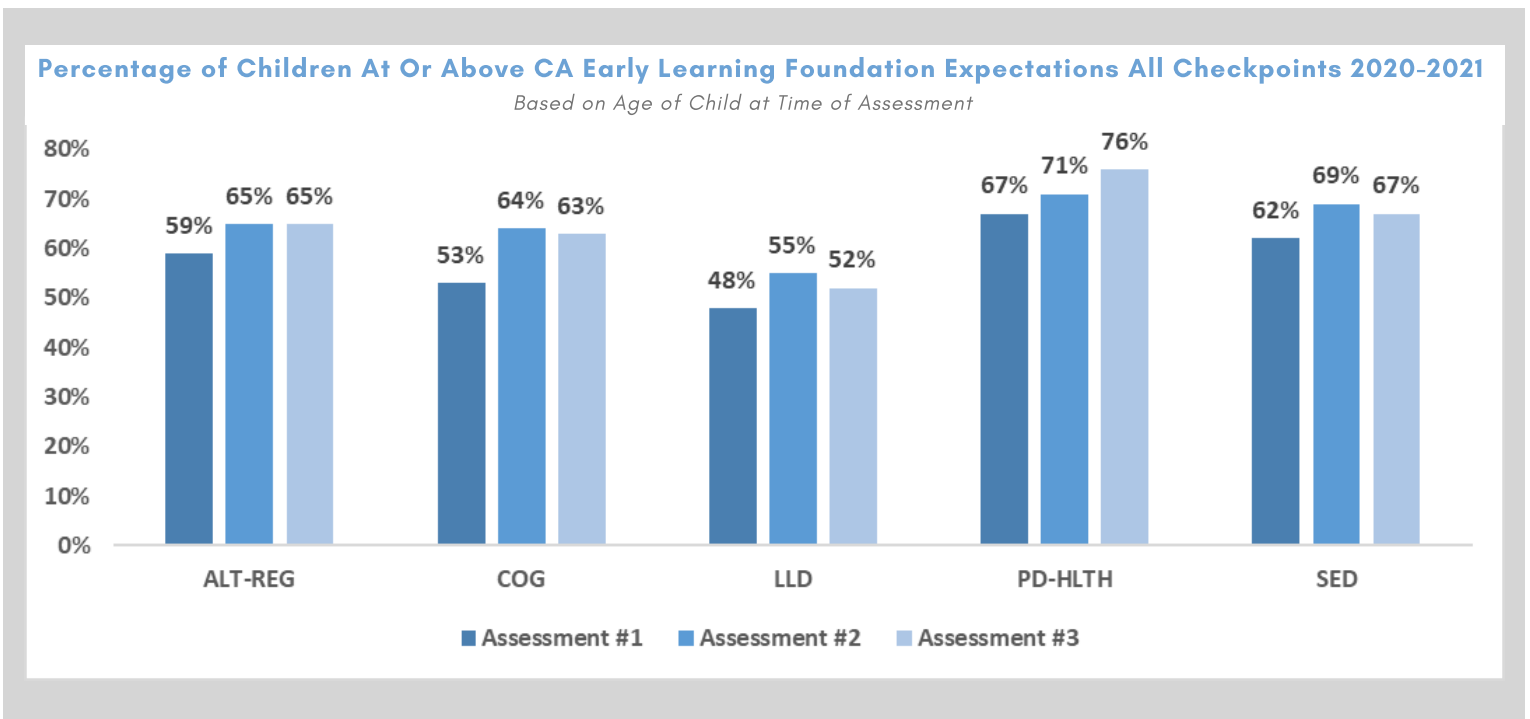


**OFFICE OF HEAD START’S
 DEFINITION OF SCHOOL READINESS**
 “..children are ready for school, families are ready to support their children’s learning, and schools are ready for children.”

**DESIRED RESULTS DEVELOPMENTAL PROFILE (DRDP) OUTCOMES
FOR ALL PROGRAM OPTIONS COMBINED:
FAMILY CHILD CARE, CENTER-BASED, & HOME-BASED PROGRAM**

For the 2020 - 2021 program year, 147/234 children participated in all three Assessment periods (Fall, Winter, and Spring). There were 9 center-based, 79 HB, and 70 FCC children participated in Assessment #1, #2, and #3. In addition, 35% of children are Dual Language Learners and 12% have an Individualized Family Service Plan (IFSP), which means that they have a developmental delay and are receiving services from the Regional Center.

The 147 children who were assessed across all three Assessment Periods showed consistent growth across all three periods in the Physical Development and Health (PD-HLTH) domain. In the Approaches to Learning (ATL) domain, gains remained static across the Winter and Spring. In the rest of the domains, children’s gains decreased between 1% to 3% from Winter to Spring.



* Full 2021 School Readiness report available upon request

STAFF PROFESSIONAL DEVELOPMENT

Staff Professional Development remained a top priority for Early Head Start. When services were converted to virtual platforms, trainings to help staff learn to work remotely, use such services as "Zoom," and increase their technology bandwidth were front and center. Foothill Family's programs teamed together to help our staff detect child safety and other possible risk factors, especially when there was no in-person contact.

One of the major accomplishments this past program year is the successful Pre-Service the week of July 12th- 16th, "virtual conference style." With its focus on self care, and helping the team transition to a "whole new world," keynote sessions focused on change management, leadership, father engagement, navigating COVID protocols, and services for Children with Disabilities. A total of 10 well-known experts and motivational speakers were invited to teach, coach, and inspire the team to do our best work serving children and families.



In alignment with the Head Start Performance Standards, Foothill Family continues the process of installing a research-based coordinated coaching program utilizing the Practiced-Based Coaching (PBC) Model. A pilot program took place during this 2020-2021 Program Year which allowed us to analyze our protocol, forms, material, and training requirements for our Partner Coaches. The program identified that an intensive one-on-one individual coaching model would be more beneficial for our Home Visitors (HV) and child-care partners. Data obtained from the child assessment, the Parent and Teachers (PAT) and HOVRS observation tool for HVs and The Pyramid Infant-Toddler Observation Scale (TPITOS) for CCP Partners were used to decide who would benefit from participating in the PBC Program.

118

**professional development
trainings**

for program staff and partners

1892

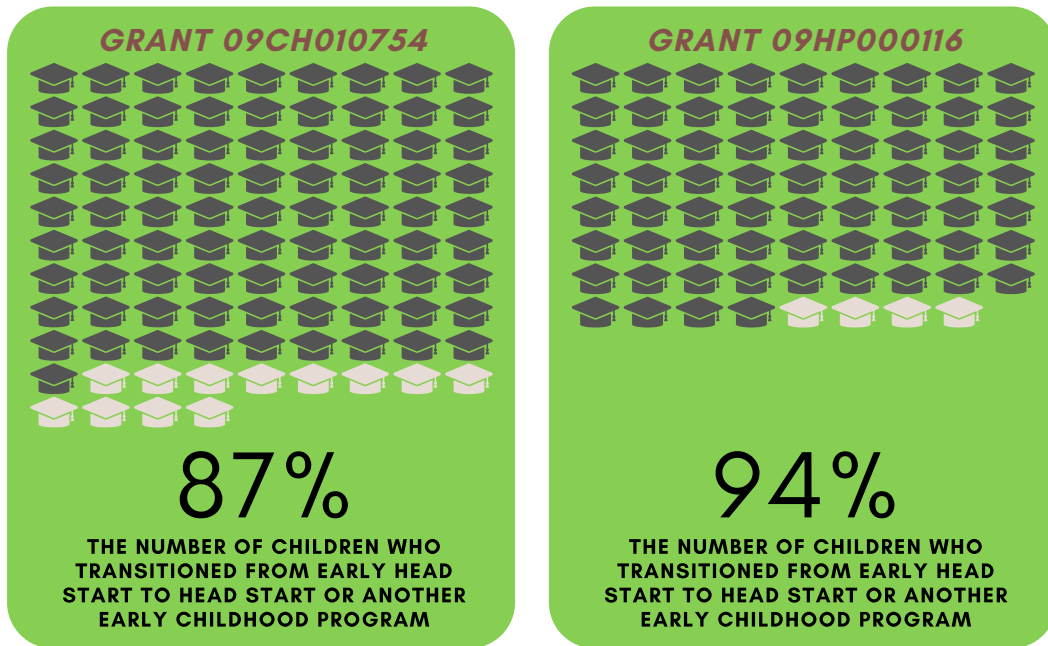
training hours

which well exceeded the 15-hour
Head Start requirement.

TRANSITIONING CHILDREN TO HEAD START & SERVICES FOR CHILDREN WITH DISABILITIES

The program has continued to build and expand upon successful partnerships with Head Start programs and Part C programs in the cities we serve in order to successfully transition children from Early Head Start to Head Start. The following table details the number of children who successfully transitioned to a Head Start program by grant:

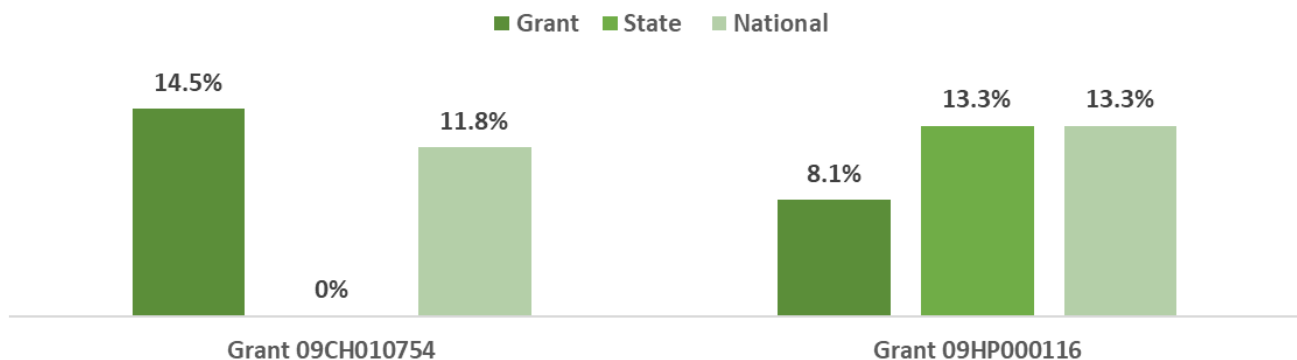
Of Those Who Aged Out, The Number of Children Who Transitioned From Early Head Start to Head Start or Another Early Childhood Program



* Information taken from 2020-2021 PIR data. HB- Home-Based; CCP - Child Care Partnerships

Recognizing the high number of children with disabilities served and their needs, EHS continued to work closely with the San Gabriel/Pomona Regional Center (SGPRC) and the East Los Angeles Regional Center (ELARC) to coordinate care for EHS families. The program offered trainings to Regional Center staff and vendors on infant mental health topics and regularly attended collaboration meetings at SGPRC. In total, the program served 60 children with an Individualized Family Service Plan (IFSP) last program year.

PERCENT OF CHILDREN WITH DISABILITIES SERVED (GRANT, STATE, NATIONAL)



* State and national percentages are taken from the 2020 - 2021 Grant State National PIR Indicator

PARENT, FAMILY & COMMUNITY ENGAGEMENT 2020 -2021 ACCOMPLISHMENTS:

Foothill Family EHS believes in the importance of building and maintaining strong partnerships with parents. Parents' and caregivers' voices are valued and their contributions have made Foothill Family Early Head Start a stronger program. They have routinely participated in focus groups and pilot projects to give their first-hand opinions on quality improvement, new ideas on recruitment, and how best to serve children.

- Approximately 40% of our families continued to participate in monthly Mental Health Wellness Checks that began at the beginning of the pandemic for the first 6 months of the program year.
- 10 parent newsletters were published in 3 languages (Eng, Sp. Ch.) so our families stayed connected. Staff, Parents, and PC officers contributed resources and articles about child development and community events to keep our families informed and engaged.
- In efforts to increase our enrollment numbers, a special Recruitment sub-committee formed by the Policy Council and 3 recruitment videos were completed.
- 31 families participated in the Drive Thru Transition Event, in which they received their certificates of completion and a free backpacks with school supplies. 17 father/father figures also participated in the event.



POLICY COUCIL

The Policy Council is actively engaged in program governance along with the Board of Directors, and is involved in a shared decision making process along with the management staff. 86% of the Policy Council (6/7) consisted of enrolled parents. The Council consisted of 6 parents (5 representatives and 1 alternates) from both Home-Based and Child Care Partnership programs and one former parent who was in the Home Based program. However, there was a decrease the number of council members this program year compared with the previous program year 2019-2020 due to the loss of participation in parent committees during the pandemic.

- There was an almost 75% increase in donated hours (over 17,210) of volunteer time through completing homework with the children, recruiting for the program, and participating in Policy Council and Parent Committee activities regardless of a decrease in number of Early Head Start parents and former parents volunteers.

Based on the yearly Client Satisfaction Survey

99%

**IMPROVED LIFE
OUTCOMES**

99%

**GOOD TO
EXCELLENT
OUTCOMES**

98%

**WOULD RECOMMEND
OUR SERVICES TO
OTHERS**

82 Completed surveys for the program year

FISCAL DATA

The total amount of public and private funds received for Early Head Start-Child Care Partnerships Grant 09HP000116:

Total HHS funding received through 6/30/2021: \$4,464,215

Total Non-federal share funding/in-kind support*: \$37,443 required
\$37,461 actual received by year-end

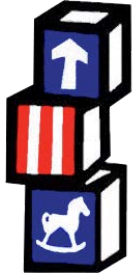
(Original amount was \$1,041,339 of which \$1,003,896 was waived by the Office of Head Start)

*Foothill Family Service’s Grant 09HP000116 received \$18 in private support Fundraising in supplies donations from individuals and foundations. The program did receive \$37,443 in in-kind donations in the forms of parent volunteer time, student internships, child care partners’ state portion of subsidy monies, and Board and Parent Council time. A Non-Federal Share Waiver was granted due to lack of community resources for the amount of \$1,003,896.

Budget Category	Actual FY2021				Contract Budget FY2021			
	Program Operations	Training Technical Assistance	Non-Federal Share	Total	Program Operations	Training Technical Assistance	Non-Federal Share	Total
Personnel	913,667	30,207	29,599	973,473	1,176,220	-	-	1,176,220
Fringe Benefits	242,122	8,005	7,844	257,970	295,209	-	-	295,209
Travel	-	31,930		31,930	400	7,845	-	8,245
Equipment	-			-	-	-	-	-
Supplies	194,562		18	194,580	968,791	800	-	969,591
Contractual	1,206,921	3,952		1,210,873	1,587,175	65,449	582,432	2,235,056
Construction	-			-	-	-	-	-
Other	181,472			181,472	179,838	-	458,907	638,745
Total Direct Charges	2,738,743	74,094	37,461	2,850,298	4,207,633	74,094	1,041,339	5,323,066
Indirect Charges	163,578			163,578	182,488	-		182,488
Total	2,902,321	74,094	37,461	3,013,876	4,390,121	74,094	1,041,339	5,505,554

HHS Funding	4,464,215	
Base	3,148,846	
T&TA	74,094	
Supplement	298,859	
Carry Over	942,416	
Non-federal share	1,041,339	
Waiver	1,003,896	(waiver approved on 12/22/21)
Revised non-federal	37,443	
Actual NFS	37,461	
Inkind	37,443	
Fundraising	18	

RESULTS OF FEDERAL REVIEW AND AUDIT



HEAD START FEDERAL REVIEW:

The program received a Head Start - Focus Area Two Monitoring Review in February 2021. From February 22, 2021 to February 26, 2021, the Administration for Children and Families conducted a Focus Area 2 (FA2) monitoring review of the Foothill Family Service Early Head Start programs. No findings were reported and the Office of Head Start acknowledged a strength in our Mental Health services.



RESULTS OF THE MOST RECENT FINANCIAL AUDIT:

The most recent financial audit was completed in of November 2020 in accordance with all OMB A-133 rules for annual audits as it applies to non-profit organizations. With unqualified opinion, no findings or questioned costs and no material weaknesses or control deficiencies were identified. The agency is currently in the middle of this year's financial audit, which will be completed by the end of November, 2021. Results will be shared with the agency's Board of Directors and Policy Council.